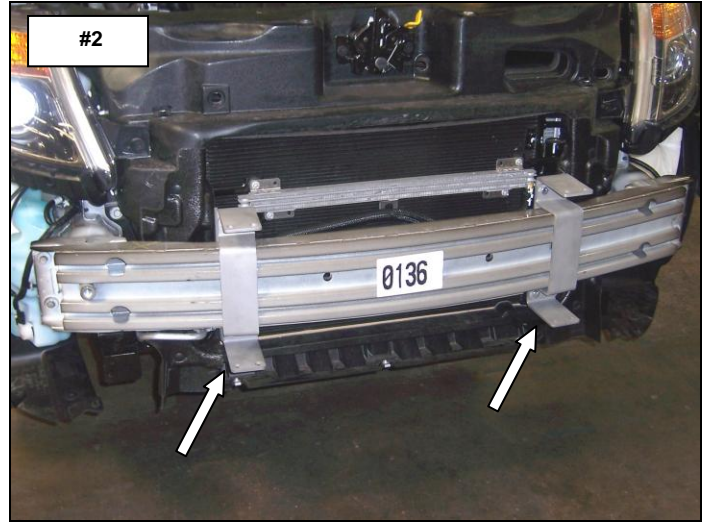


Installation

Step-1 Refer to the installation instructions included with the push bumper (#5340) to remove the bumper fascia and install the push bumper main brackets. **Picture #1 & #2**

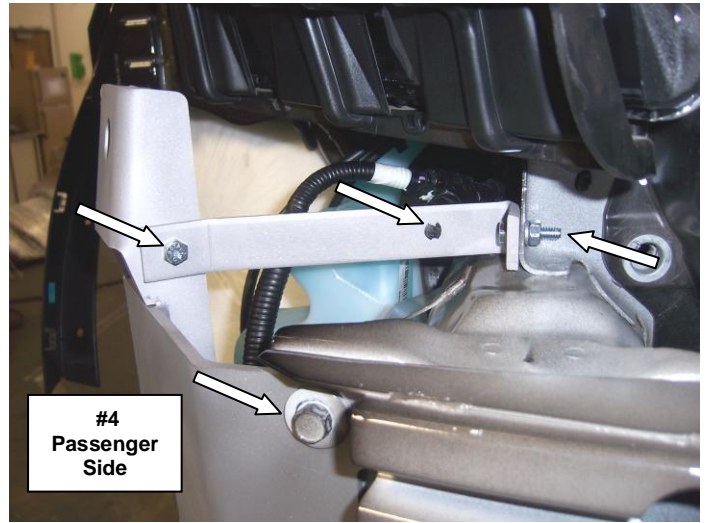
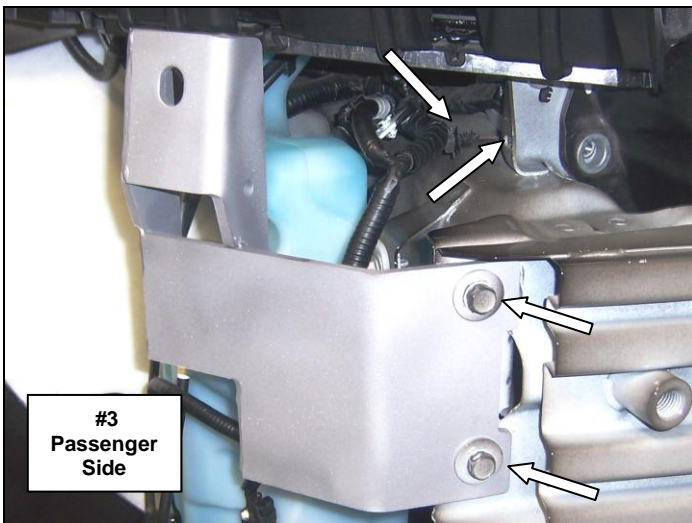


Step-2 Beginning with the passenger side, remove the (2) 13mm head bolts securing the end of the steel impact beam to the frame. Install the passenger side brush guard bracket by positioning the bracket flanges inside the opening at the end of the impact beam, align the holes in the bracket with the threaded inserts in the frame and secure the bracket and impact beam to the frame using the factory bolts. **Picture #3**

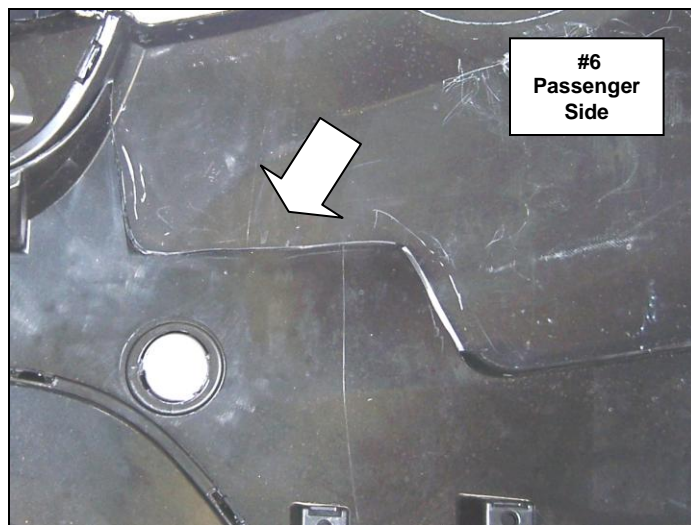
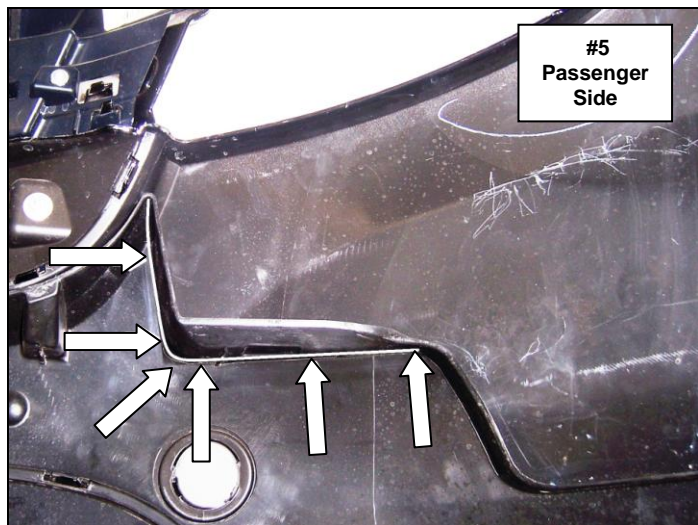
Step-3 Use a slotted blade screw driver to pry and remove the plastic fastener securing the wiring harness to the frame bracket. **Picture #3**

Step-4 Install (1) of the auxiliary brackets to the brush guard bracket and to the hole in the frame bracket using (2) 1/4" x 1" hex bolts, (2) 1/4" lock washers and (2) 1/4" hex nuts. Tighten the impact beam bolts, the 1/4" nuts and bolts and reattach the wiring harness fastener to the hole provided in the auxiliary bracket. **Picture #4**

Repeat the above steps to install the driver side brackets.

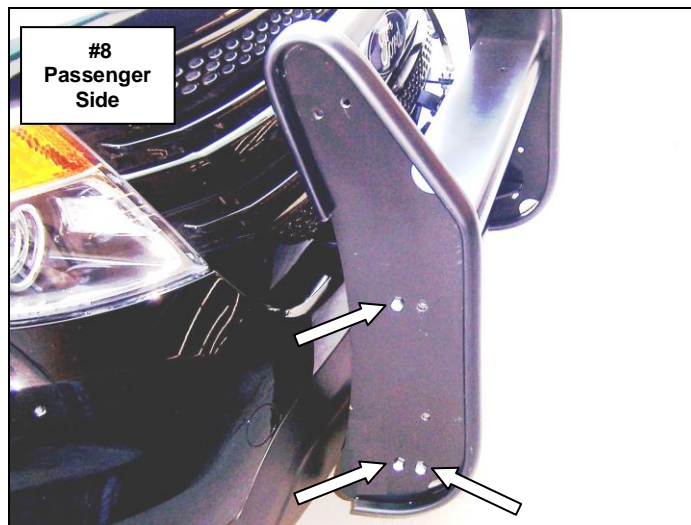
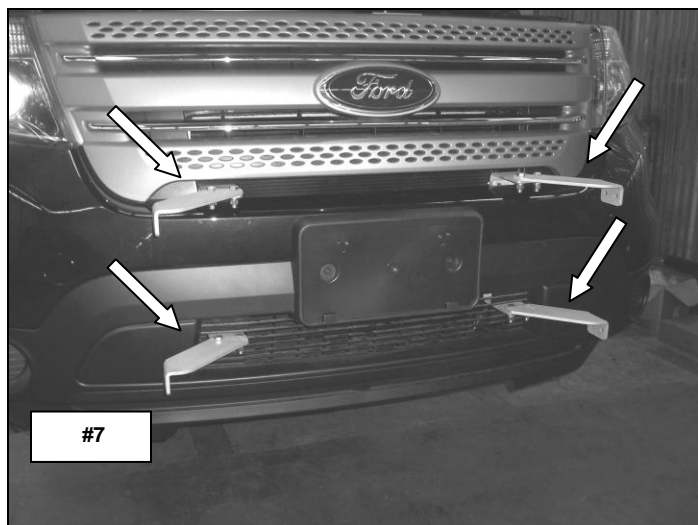


Step-5 The bumper insulator must be notched to properly fit around the brush guard brackets. Use a utility knife to cut and remove the outlined area from the driver and passenger side of the bumper insulator. Passenger side shown before **Picture #5** and after **Picture #6**



Step-6 Refer to the installation instructions included with the push bumper (#5340) to complete the push bumper bracket installation. **Picture #7**

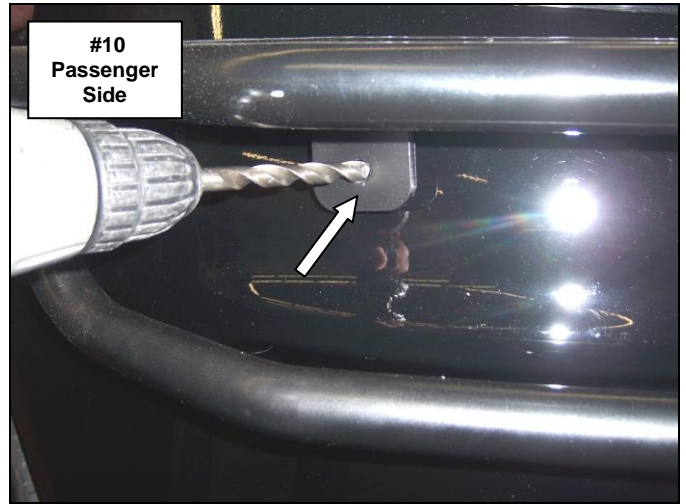
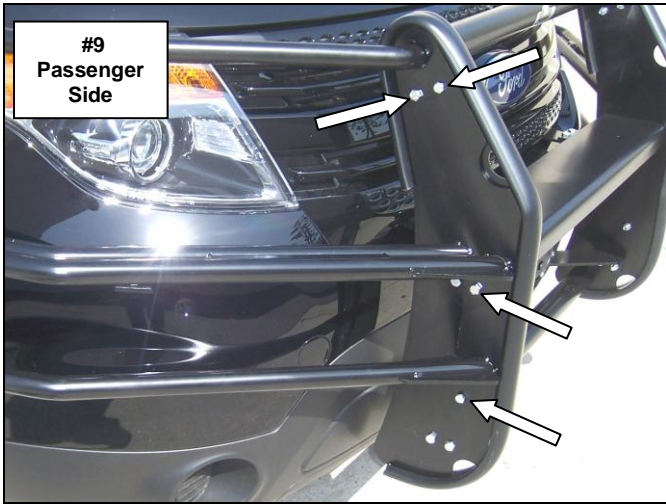
Step-7 Attach the push bumper to the rear hole in each of the upper extension brackets using (1) 3/8" x 1" hex bolt, (1) 3/8" lock washer and (1) 3/8" hex nut, and to each of the lower extension brackets using (2) 3/8" x 1" hex bolts, (2) 3/8" lock washers and (2) 3/8" hex nuts. **Picture #8** Leave the nuts and bolts loose for final adjustment.



Step-8 Attach the passenger side brush guard to the push bumper using (4) 3/8" x 1 1/4" hex bolts, (4) 3/8" lock washers and (4) 3/8" hex nuts. **Picture #9** Leave the nuts and bolts loose for final adjustment.

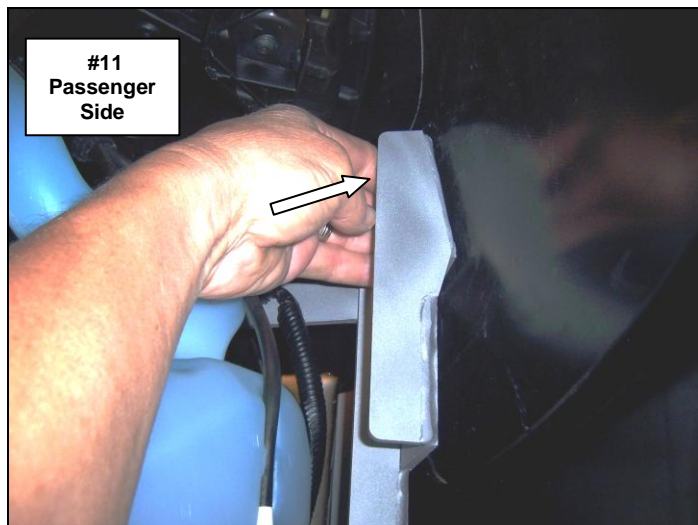
Step-9 Position the brush guard mounting tab against the bumper fascia, and use the hole in the mounting tab as a guide to drill a 7/16" hole through the bumper fascia. **Picture #10**

Note: It may be necessary to also drill through the brush guard bracket to align the mounting tab and brush guard bracket holes.



Step-10 From behind the bumper fascia, position (1) 3/8" nut plate inside the channel of the brush guard bracket and secure the passenger side brush guard to the bumper fascia and brush guard bracket using the nut plate, (1) 3/8" x 1 1/4" hex bolt and (1) 3/8" lock washer. **Picture #11 & #12**

Repeat the above steps to install the driver side brush guard.



Step-11 Align the push bumper and brush guard assembly with the vehicle and tighten all nuts and bolts. Remember to check and retighten the nuts and bolts periodically.

